



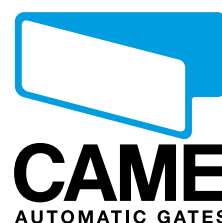
Automatic pay to  
park facilities for  
up to 10,000  
spaces

# PS

## Pay to park facilities

**The solution for all types  
of parking facilities, even  
multi-level ones**

PS is a complete system for managing pay to park facilities, for both occasional and registered parkers. The system can be configured with one or more, either manual or automatic, cash registers on multi level facilities with signage showing occupancy counts.



# Ps

## Pay to park facilities

Parking systems  
for managing  
registered and  
occasional parkers

Came's parking management systems are the ideal solution when it comes to getting the most efficiency out of the service you provide. It lets you simultaneously monitor operating costs and traffic safety. Each component, in fact, has been specifically engineered to meet all of the typical needs of automated parking lots, while keeping maximum modularity and integration with all Came products. This follows the specific philosophy of – place no limits on system development. So, choosing Came means getting the most potential out of a product which has been designed around your needs.



### The PS BARCODE system.

The system issues tickets printed on ISO standard, pre-cut, fanfold chemical paper. It is not UV-ray nor magnetic- field sensitive, while improving the system's functionality when compared to the magnetic strip tickets.



### The PS TOKEN system.

The transponder token, used with occasional parkers, is like a security instrument, because it is small and reusable.



### The PS EASY system.

The PS EASY system, can be used in "stand alone" mode, and may be coupled with CAME's RBM21 or RBM84 access control systems, for added functions. The unit is built to house a proximity card sensor.

## The unit features



### Solid, well finished cabinets.

Made out of sturdy sheet steel, these are treated to resist rust and coated with epoxy powder.

### Graphics.

Are simple clear and intuitive, words are in English and screen printed on the front parts.

### Safety locks.

Each unit is fitted with locks and keys at various points for internal control and ordinary, scheduled maintenance of the system.

### Anchoring bases.

These are laid for mounting on cement bases, with holes for housing and securing the apposite anchoring means.





# The Standard system

After choosing the functioning mode, meaning either Ps BARCODE, Ps TOKEN or Ps EASY, you can customise your system. This modularity is ensured by all of the complementary devices, that is, entrance units, manual cash registers, barriers, etc.) which allow, when fully equipped, to configure systems made up of:

- > 16 entrance units
- > 16 exit units
- > 8 automatic cash registers
- > 1 manual cash registered
- > 16 auxiliary cash registers



## Simple Parking Set up

For small parking facilities with fixed rates or exchangers, we suggest the Ps EASY system. The Ps EASY cash register can be positioned either at the entrance or exit. It allows toll taking at fixed rates while commanding the opening of the Gard series barrier, which controls vehicle flow rates. The system can also be integrated with proximity sensors and the Came RBM84 access control system. This system manages registered parkers, occupancy and signalling with FREE/FULL outdoor sign.

**This solution is user friendly and cost effective in terms of investment.**



Ps EASY



## Essential Parking Set Up

Medium-size parking facilities are ideal for the essential parking set up, that is, entrance and exit units plus an automatic cash register.

The Ps BARCODE and Ps TOKEN are ideal for managing this type of system. These are typically applied in shopping mall parking lots. Parkers can even pay directly at the outer, manned cash register, or at the auxiliary cash registers at the indoor points of sale.

**This solution ensures efficiency, simplicity, modularity to the system.**



## Structured Parking Set Up

In large multi-level or below ground parking facilities, the Ps BARCODE and Ps TOKEN systems can be configured accordingly with management needs. This even means configuring complex systems consisting of sixteen entrance and sixteen exit ways, with twelve automatic and sixteen auxiliary cash registers, plus one manual, manned cash register.

**This solution is just right for large parking facilities.**

# Components Description

Ps is a complete system for managing commercial parking lots; whether these be small, medium or large. There are 3 available versions depending on the needs. The Ps BARCODE which works via barcode tickets and coin, bill or credit card payment options. Also, the Ps TOKEN, which works with reusable transponder tokens and a coin, bill and credit card pay system. And, the Ps EASY which works at fixed rates with coins.

## The components



### Interphone Set Up.

Linked up to the central control via optional interphone for emergency calls.

**Ps BARCODE** - PSE3000 - PSC3000  
PSC7000 - PSC7001 PSU3000  
**Ps TOKEN** - PSE4000 - PSC4000  
PSC6000 - PSC6001 - PSU4000  
**Ps EASY** - PS5000



### Touch screen monitor.

Practical and functional, it allows you to select the language and view any promotional messages.

**Ps BARCODE** - PSC7000 - PSC7001  
**Ps TOKEN** - PSC6000 - PSC6001



### Customised management unit.

There are different versions of automatic cash registers. You can choose several payment methods (i.e. like credit card reader version).

**Ps BARCODE** -PSC7000 - PSC7001  
**Ps TOKEN** - PSC6000 - PSC6001



## The Entrance unit

Up to sixteen of these can be installed at parking lot entrances. It gives occasional parkers tickets to gain access to the facilities. While registered parkers use their own proximity cards by sweeping it close the sensor/reader. Typically entrance units are coupled with Came, Gard or Gard4 series barriers, and command and safety accessories, depending on the technical standards involved.

## Automatic cash register

Up to 8 can be installed inside or outside of the parking facility, under a sturdy cover. It is indispensable for parkers to pay by themselves and can vary depending on the required payment options. Parkers can also recharge (prepay) their cards directly at the automatic cash register.

## Manned manual cash register

It can be installed either inside or outside the parking facility and is indispensable for manned parking facilities. The manual register handles the system, collects tolls, recharges registered user cards and issues new cards, in case some are lost. The manual cash register allows you to remotely manage the parking system, via modem or GSM links.

## Auxiliary cash register

Up to sixteen units can be remotely positioned from the actual parking lot. It only collects tolls manually after re-reading barcode tickets or transponder tokens.

## The Exit Unit

Up to sixteen of these units can be installed at parking lot exits. With it occasional users can exit the parking lot after paying toll at a cash register. Registered parkers, on the other hand, can use their own proximity cards by sweeping them close the sensor/reader. Exit units are also typically coupled with Came Gard and Gard4 series automatic barriers and command and safety accessories, depending on the required technical standards.

## Automatic barriers

These are indispensable to regulate vehicular flows and user passage selection. These are installed along entrance and exit walkways and coupled with a range of command and safety accessories depending on the required standards.

# The complete range

Ps is a complete system for managing commercial parking lots; whether these are small, medium or large. Three versions are available depending on the needs. The Ps BARCODE works with barcode tickets plus the coins, bills and credit cards pay functions. The Ps TOKEN works via a reusable transponder token and coin, bill or credit card pay- system. Whereas the Ps EASY works with coins and at fixed rates.

## Ps BARCODE Series



**PSE3000**  
ENTRANCE  
Unit



**PSC3000 - PSC7000 - PSC7001**  
CASH REGISTER  
Unit



**PSU3000**  
EXIT  
Unit

## Ps TOKEN Series



**PSE4000**  
ENTRANCE  
Unit



**PSC4000 - PSC6000 - PSC6001**  
CASH REGISTER  
Unit



**PSU4000**  
EXIT  
Unit

## Ps EASY Series



**PS5000**  
CASH REGISTER  
Unit

## Gard Series



**GARD**  
Barriers

**G2500N**  
Max width span 2.5 m  
**G4000N**  
Max width span 4 m  
**G4000I**  
Max width span 4 m (INOX)



**GARD4**  
Barriers

**G4040Z**  
Max width span 3.75 m  
**G4041Z**  
Max width span 3.75 m  
**G4040IZ**  
Max width span 3.75 m (INOX)



### Change dispenser.

The automatic cash registers can take either bill, coin or credit card payments. The change dispenser, which only returns coins, can be set by the operator in accordance with the rates used.

**Ps BARCODE** - PSC7000 - PSC7001  
**Ps TOKEN** - PSC6000 - PSC7001



### Graphic display.

Shows on screen registered parkers' residual credit and the amount reached.

**Ps BARCODE** - PSE3000 - PSC3000  
**Ps TOKEN** - PSC4000  
**Ps EASY** - PS5000



### GSM diagnosis (optional).

Sends sms notice of:

- System status
- Printer paper
- Change dispenser availability
- Bank bill balance

**Ps BARCODE** - PSC7000 - PSC7001  
**Ps TOKEN** - PSC6000 - PSC6001



# The software

The Windows-based management software features a clear, intuitive graphic interface and requires no special hardware. Using it is extremely simple, even without training. Staff will be able run the system quickly and in the mode decided by management. It does not need to be permanently linked to a PC, except for initial configuration requirements and when inputting new registered users. It can handle up to 2,500 registered and 7,500 occasional users, totalling 10,000 parking spaces, and can be tele-managed as well.



## Traffic lights and signs.

The traffic light and PSSRV and PSINS luminous sign are indispensable tools for managing parking facilities. Connected to the system and the software, they provide outer signs to notify of parking space occupancy/availability.



## Jointed barrier boom.

Gard4 is now available in the new semi-elliptic G03750 jointed, sectional, tubular barrier boom version. This makes it installable even when overhead space for the barrier to open is an issue.



## Metal mass detector coils.

These command barrier openings only with a vehicle present, thus restricting any unauthorised pedestrian traffic.

## The functions



## The management software

The management software

Standard issue, it manages all parking facility data, and records all events, manages all and registered occasional parkers, while supervising all of the peripheral units set up in the controlled area. The software also allows you to provide all services modes (i.e. opening and closing times, time/rate brackets, conventions and complementary parking, etc.), which result in a host of hierarchies and usage levels.

the controlled devices are essentially:

- Entrance unit
- Exit unit
- Barriers
- Automatic cash registers
- Parking occupancy counting systems
- Traffic lights and Vacant/Full signs

The system is managed by a control unit made up of:

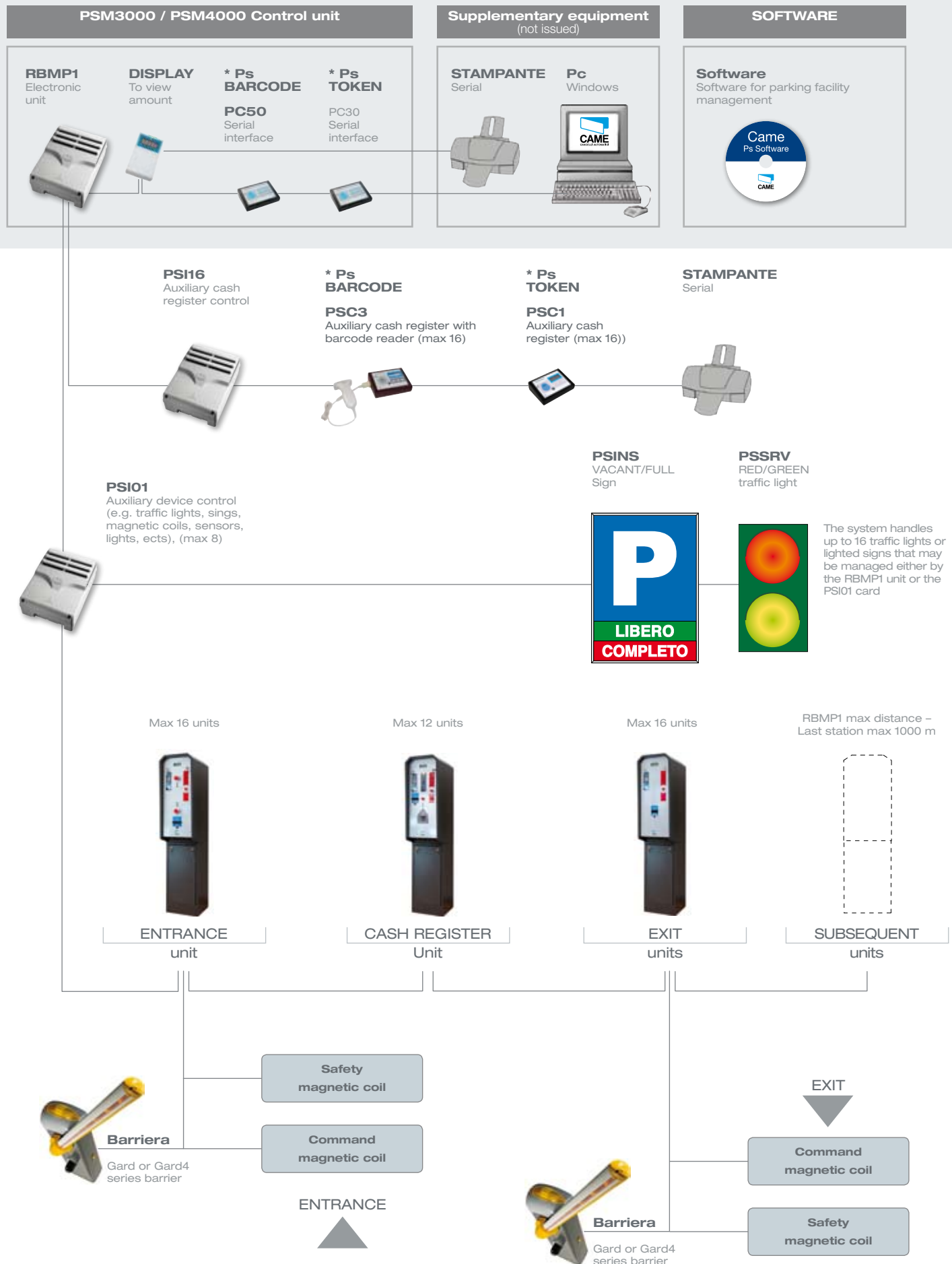
- RBMP1 main electric control panel
- Serial interface for connecting to the PC60 or PC30 personal computers (which act also as card and transponder token and barcode ticket readers )
- Programming and management software
- Amount due visual display.

## Main characteristics of the touch-screen cash registers

- Multilingual menu with 6 languages to choose from.
- Programmable coin reader depending on the currency being used.
- Programmable banknote reader depending on the currency being used.
- "VisaPED" certified credit card reader, with optional hand positioning of the card.
- Notification mode during payment operations: amount reached, amount missing, amount of change.
- GSM based diagnosis with optional real time checking of system status.
- Set up to be fitted with interphone connection with HELP button for calls.
- Management of registered users via cards, TAGs or transponder keyfobs, and recharging of registered parkers' prepaid credits directly at the cash register.
- Advertising or duty messages for clients.



# The system setup



**NOTE:** \*Ps - Ps - item to choose depending on the system type.

Made in Italy



For its quality processes management Came Cancelli Automatici is ISO 9001:2000 certified, and for its environmental management it is ISO 14001 certified. Came designs and manufactures entirely in Italy.

PRODUCTS



# Information

## Technical characteristics

Type	Description	Dimensions (BxHxP) mm	Power source (V)	Material / Colour	IP	Working temp °C
<b>Ps TOKEN</b>						
PSE4000	Entrance unit	480x1500x300	230 A.C. 50/60 Hz	RAL 1028/Steel	44	-20÷55
PSC4000	Automatic cash register	335x1500x300	230 A.C. 50/60 Hz	RAL 1028/Steel	40	-20÷55
PSU4000	Exit unit	330x1500x300	230 A.C. 50/60 Hz	RAL 1028/Steel	44	-20÷55
PSC6000 / PSC6001	Automatic cash register	800x1755x500	230 A.C. 50/60 Hz	Cod. 053 0837 /Steel	40	-20÷55
<b>Ps TOKEN control system</b>						
PSM4000	Man on cash register control unit	-	230 A.C. 50/60 Hz	-		
<b>Ps TOKEN accessories</b>						
PC30 (included with PSM4000)	PC interface	320x240x145	-	ABS		
PSI16	Auxiliary cash register control	320x240x145	-	ABS		
PSIO1	Auxiliary device control	320x240x145	-	ABS		
PSC1	Auxiliary cash register	320x240x145	-	ABS		
<b>Ps BARCODE</b>						
PSE3000	Entrance unit	330x1500x300	230 A.C. 50/60 Hz	RAL 1028/Steel	44	-20÷55
PSC3000	Automatic cash register	335x1500x300	230 A.C. 50/60 Hz	RAL 1028/Steel	40	-20÷55
PSU3000	Exit unit	330x1500x300	230 A.C. 50/60 Hz	RAL 1028/Steel	44	-20÷55
PSC7000 / PSC7001	Automatic cash register	800x1755x500	230 A.C. 50/60 Hz	Cod. 053 0837 /Steel	40	-20÷55
<b>Ps BARCODE control system</b>						
PSM3000	Man on cash register control unit	-	230 A.C. 50/60 Hz	-		
<b>Ps BARCODE accessories</b>						
PC 50 (included with PSM3000)	PC Interface	320x240x145	-	ABS		
PSI16	Auxiliary cash register	320x240x145	-	ABS		
PSIO1	Auxiliary device control	320x240x145	-	ABS		
PSC3	Auxiliary cash register with barcode reader	320x240x145	-	ABS		
PSPD1	Pedestrian transponder and barcode reader/barcode	145x185x40	-	ABS		
<b>Signalling accessories</b>						
PSSRV	Red/green traffic light	265x488x4375	-	ABS/polymethacrylated		-20÷55
PSINS	Vacant/Full sign	445x1500x452,5	-	ABS/polymethacrylated		-20÷55
<b>Command accessories</b>						
TST01 - TST04	Transponder cards	ISO7810-7813	-	-		
GET	Transponder token	ø 30	-	ABS		
TICKET FANFOLD	Barcode ticket (2000 pcs. Pack)		-			
<b>Safety accessories</b>						
SMA2	2-channels metal mass detector sensor/2 canali					
<b>Ps EASY</b>						
PS5000	SIMPLIFIED automatic cash register	335x1500x452,5	230 A.C. 50/60 Hz	RAL 1028/Steel		-20 ÷ 55

## Cables and distances

Max connection distances	(m)	Connection cable	Type
PC - PC30	1,5	PC - PC30	Standard
PC - RBMP1	*1000 max	PC - PC30	Screened twisted bipolar min 2x50mm <sup>2</sup> or CAT5 UTP 24 AWG cable
RBMP1 - PSC4000	*1000 max	PC - PC30	Screened twisted bipolar min 2x50mm <sup>2</sup> or CAT5 UTP 24 AWG cable
RBMP1 - PSE4000	*1000 max	PC - PC30	Screened twisted bipolar min 2x50mm <sup>2</sup> or CAT5 UTP 24 AWG cable
RBMP1 - PSU4000	*1000 max	RBMP1 - PSE4000	Screened twisted bipolar min 2x50mm <sup>2</sup> or CAT5 UTP 24 AWG cable
RBMP1 - PSC6000	*1000 max	RBMP1 - PSU4000	Screened twisted bipolar min 2x50mm <sup>2</sup> or CAT5 UTP 24 AWG cable
RBMP1 - PSC6001	*1000 max	RBMP1 - PSC6000	Screened twisted bipolar min 2x50mm <sup>2</sup> or CAT5 UTP 24 AWG cable
*Maximum length of the BUS 485 network		RBMP1 - PSC6001	Screened twisted bipolar min 2x50mm <sup>2</sup> or CAT5 UTP 24 AWG cable

## Limits to use

Function	(m)
Max number of parking spaces	10000
Dedicated Software	YES
Use without PC	Partial YES
Type of PC connection	RS232 - RS485

© Came KDEP#CEN71A3Z10409 - 6/09

**Came**  
**cancelli automatici**  
**S.p.A.**

via Martiri della Libertà, 15  
31030 Dosson di Casier  
Treviso - ITALY  
[www.came.com](http://www.came.com) - [info@came.it](mailto:info@came.it)

The data and information shown in this catalogue are subject to change without the obligation to give prior notice by Came cancelli automatici S.p.A.

